

SADDLEBROOK AT SHELBORNE 44

STEP UP TO QUALITY



3340 Whispering Pines Lane, Carmel, IN 46032
5,298 Finished Square Feet

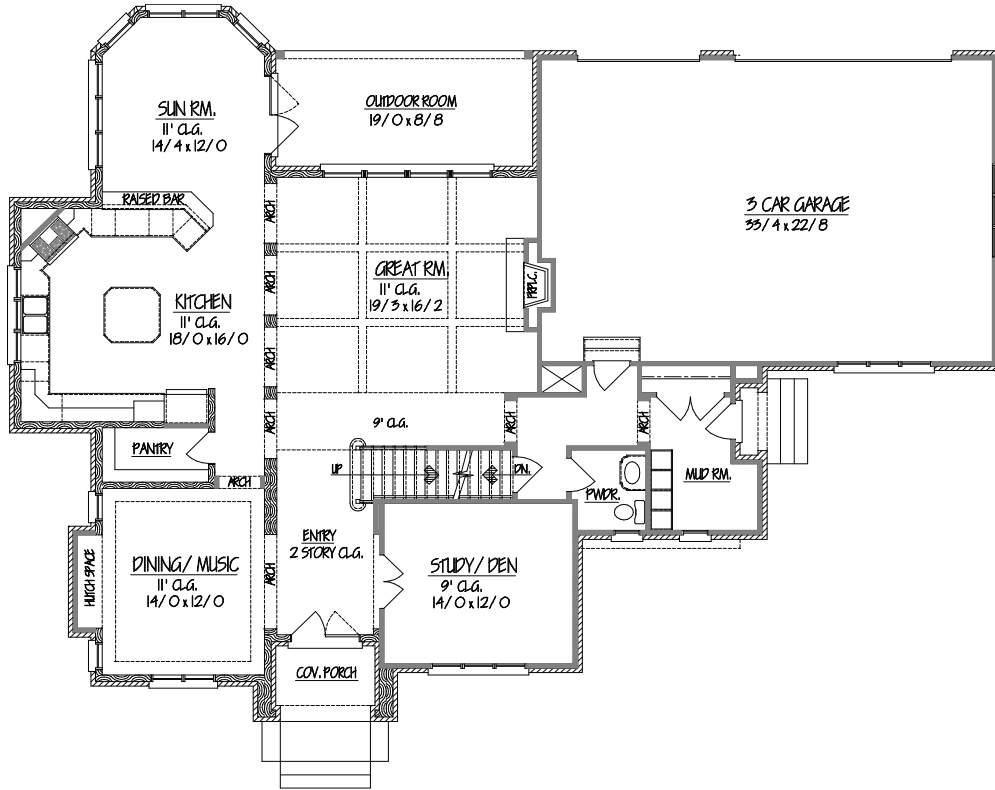
SADDLEBROOK AT SHELBORNE

shopping malls, local restaurants, grocery stores, banking, and medical facilities, Saddlebrook at Shelborne is smartly located between Meridian Street and Michigan Road northern corner of the intersection of 46032.

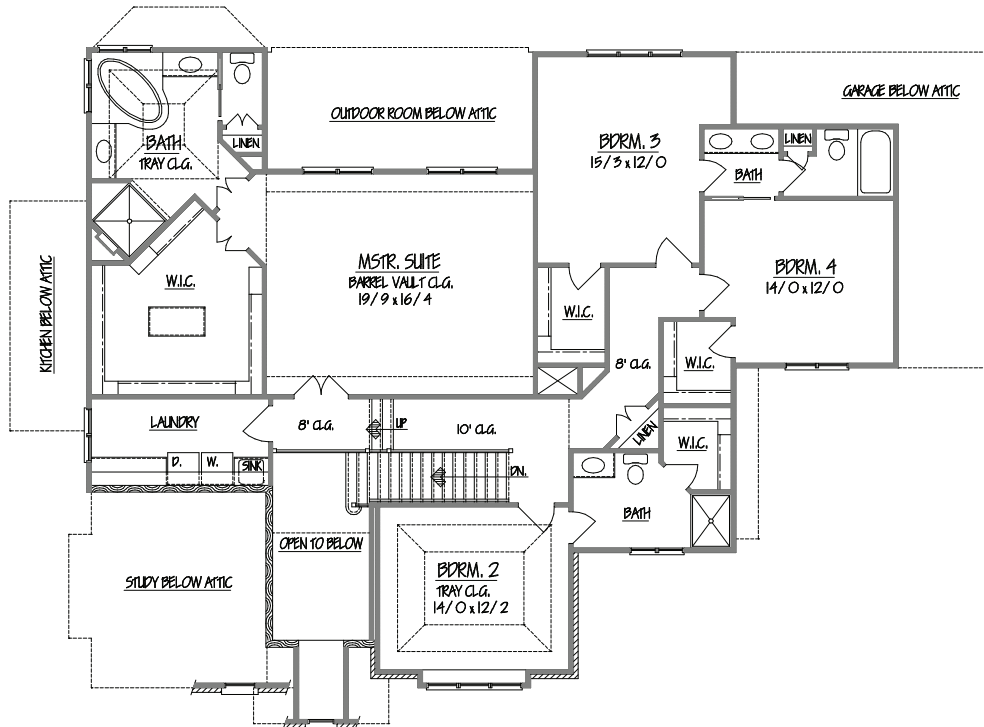
HOMES *by* **REXBROWN**
Custom Built Quality Since 1993

DESIGN • BUILD • REMODEL
HomesByRexBrown.com
(317) 587-1388

[BUILD WITH EXPERIENCE]



MAIN FLOOR 1,703 SQ. FT.



SECOND FLOOR 1,809 SQ. FT.

