

HARTFORD

STEP UP TO QUALITY



BUILD WITH EXPERIENCE

Since 1993, We've Built Over 200 Custom Homes

WINNER OF 11
HOME-A-RAMA AWARDS

HOMES *by* **REXBROWN**
Custom Built Quality Since 1993

DESIGN • BUILD • REMODEL

HomesByRexBrown.com

(317) 587-1388

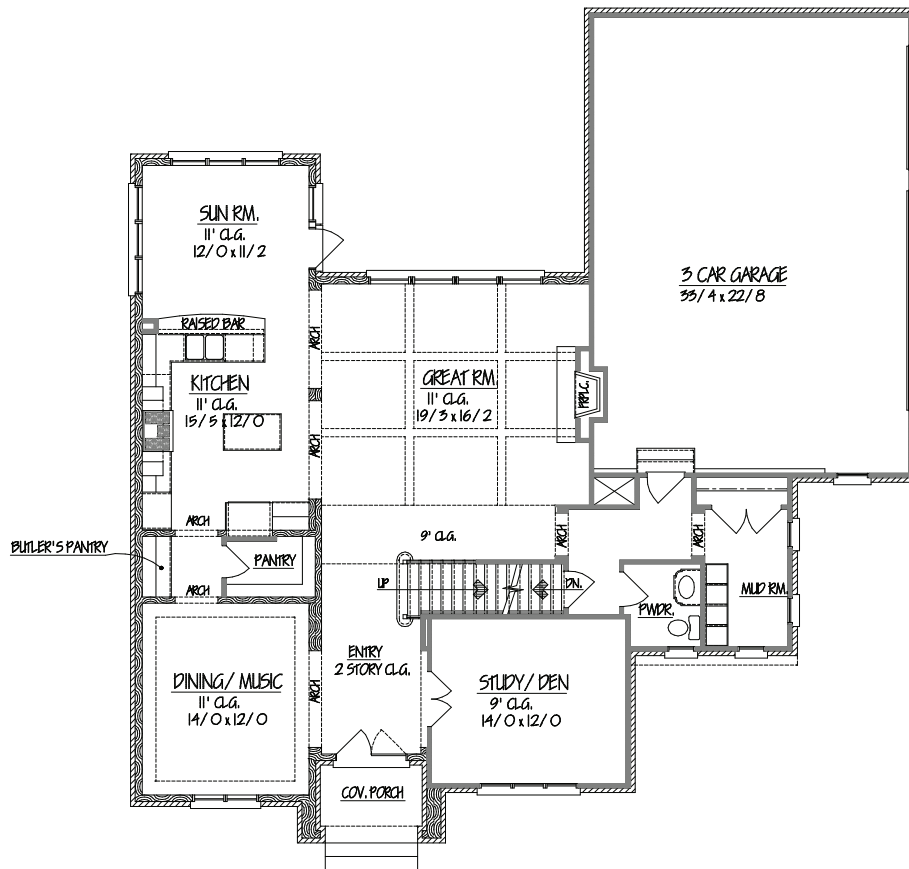


Inquire today about Rex's Trade Program that's available for your custom dream home or any of Rex's spec homes. Learn how Rex can move you into your dream home easier than any other builder.

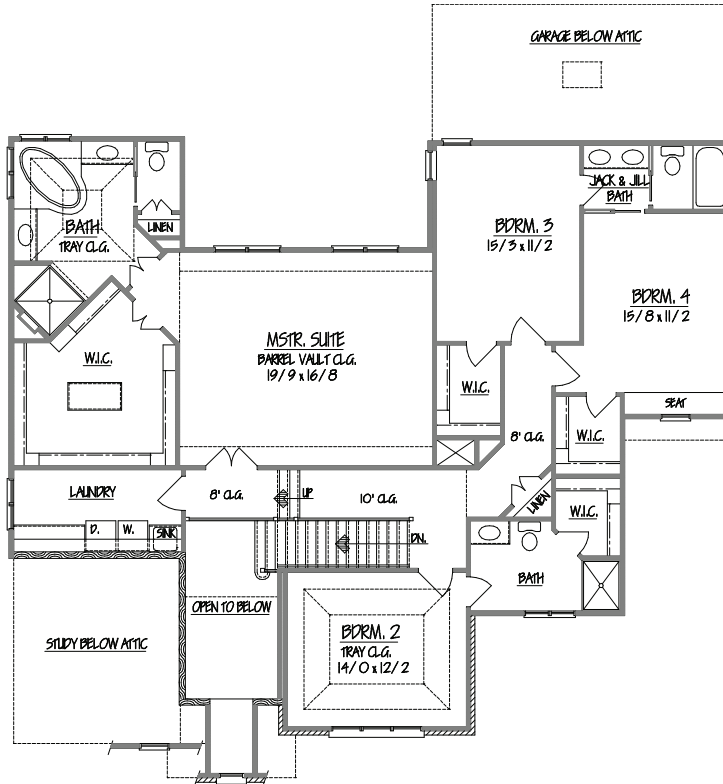
Hartford
4,955 Square Feet

\$412,000 (Base Plan)

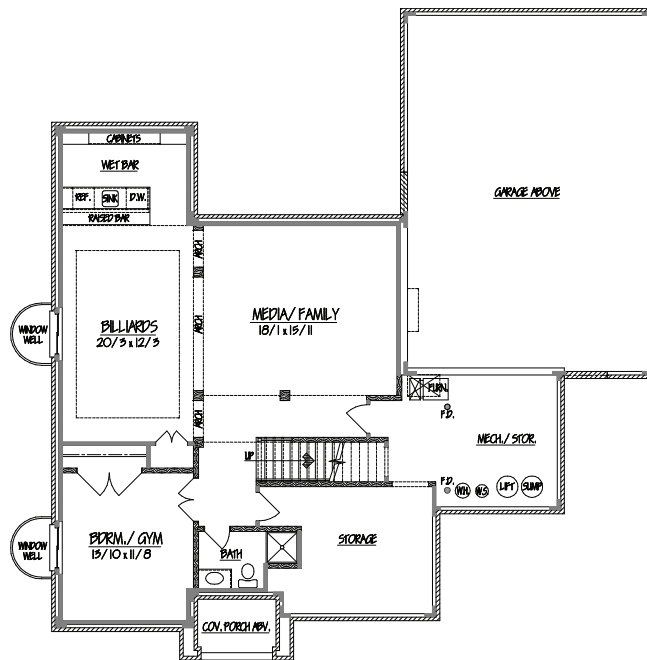
- New custom floor plan with open main level & large open views
- French Country architecture
- Grand double wide front door
- Anderson brand casement clad windows
- 3-car finished garage with openers & keypad
- All large bedrooms with large walk-in closets and full baths with Jack/Jill
- Chef's kitchen with built-in SS appliances, large island, & walk-in pantry
- Kitchen has open view of main living areas
- Large 2nd floor laundry with built-in sink & cabinets
- 2-story foyer with views from above
- High 11' ceilings in dining, kitchen, sunroom and great room
- Large sunroom/breakfast room
- Large mud room with built-in lockers & walk-in coat closet
- Luxurious master suite with spectacular barreled ceiling, jetted tub & large shower with 2 shower heads
- Large basement, ready to finish, 9' ceilings, large windows, 5th bedroom, media/theater area, billiards/gaming
- Basement roughed-in for full bath & wet bar
- Water protected basement with 2 main sump pumps & battery back-up system
- Home pre-wired for Cat-5 Network & alarm
- Solid core interior doors with oil rubbed bronze hardware throughout
- Custom designed trim package & stairway with copper rubbed steel spindles
- Rich trim & wall paint colors in eggshell finish for easy cleaning



MAIN FLOOR 1,555 SQ. FT.



SECOND FLOOR 1,785 SQ. FT.



LOWER LEVEL

READY TO FINISH: 1,120 SQ. FT.
TOTAL: 1,615 SQ. FT.